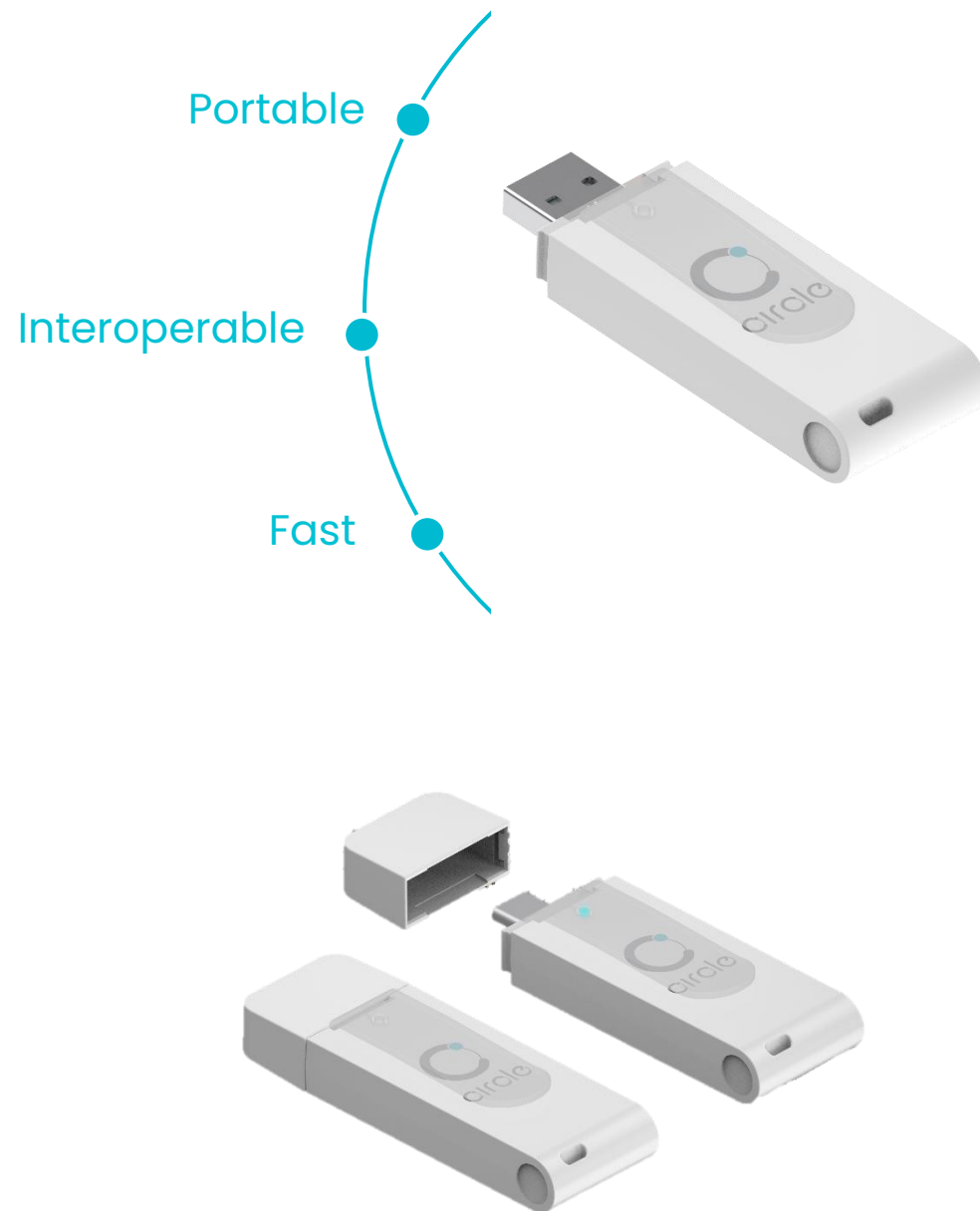


CIR315C

Contactless Smart Card Reader

CIR315C Contactless Smart Card Reader, a portable and compact token for comprehensive contactless smart card applications for contactless smart card applications such as e-government, access control, network log-on, transportation and payment.

- Supports ISO/IEC 14443, ISO/IEC 18092 and ISO/IEC 15693 standards
- Supports ISO/IEC 14443-4 Type A & B cards, ISO/IEC 15693-3 cards, MIFARE® series, FeliCa, Calypso and NFC Forum Type 1/2/3/4/5 Tags
- Supports extended APDU
- Complies with CCID standard
- Conforms to PC/SC specifications
- Firmware upgradable
- Works on different operating systems
- Optional connector types: USB A or USB C





CIR315C

Contactless Smart Card Reader

Contactless Smart Card Interface

Standard	ISO/IEC 14443, ISO/IEC 18092, ISO/IEC 15693
Protocol	T=CL (translated to T=1 for PC/SC compliance)
Operating Frequency	13.56 Mhz
Supported Card Types	ISO/IEC 14443-4 Type A & B Cards, ISO/IEC 15693-3 Cards, MIFARE® series: Classic/ Plus/ Ultralight/ Ultralight C/ DESFire/ DESFire EV1/ DESFire EV2, etc. FeliCa (Standard/ Lite/ Plug), Calypso, NFC Forum Type 1/2/3/4/5 Tags
Speed	106/ 212/ 424/ 848 kbps
Reading Distance	Up to 40 mm (depending on tag type)
Extended APDU	Support

Physical Characteristics

Dimensions	72.0 mm (L) x 24.0 mm (W) x 10.0 mm (H)
Weight	12.5 g (± 2 g)
Casing	White ABS

Host Interface

Power Supply	USB Bus-powered
Current Consumption	<250 mA (Operating) <50 mA (Standby)
USB Standard	USB 2.0 Full Speed (12 Mbps)
USB Connector Type	Default: Type A Optional: Type C

Human Interface

LED	1 LED: Blue (Operation Status)
-----	--------------------------------

Software and Driver

Firmware Upgradeable	Support, via USB
Driver	CCID
Application Programming Interface (API)	PC/SC

Operating Conditions

Operating Temperature	-10 °C – 70 °C
Operating Humidity	Max. 95% (non-condensing)
Storage Temperature	-20 °C – 70 °C
Meantime Between Failure (MTBF)	600,000 hours

Compliance/ Certifications

Standards/ Systems	ISO/IEC 14443, ISO/IEC 18092, ISO/IEC 15693, USB 2.0 Full Speed, CCID, Microsoft® WHQL
Regulatory/ Environmental	EN 62368, CE, FCC, VCCI, MIC, RoHS3, REACH

Operational Environment

Supported Operating Systems	Windows® 7 SP1 and above, Linux®, macOS® 10.12 and above, Android™ 6.0 and above
-----------------------------	--

Ordering Information

Product Code	CIR315C-01: USB Type A Connector (Standard) CIR315C-02: USB Type C Connector
--------------	---